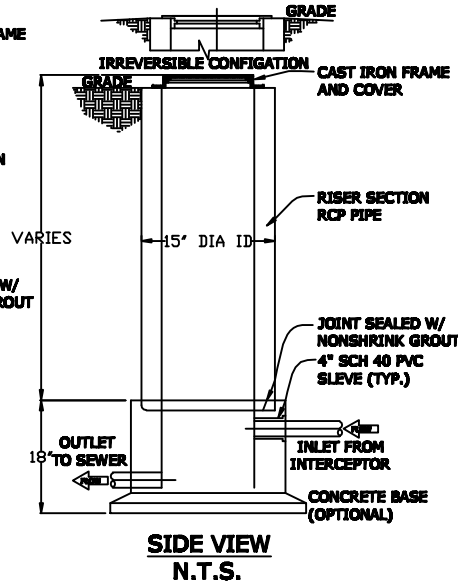
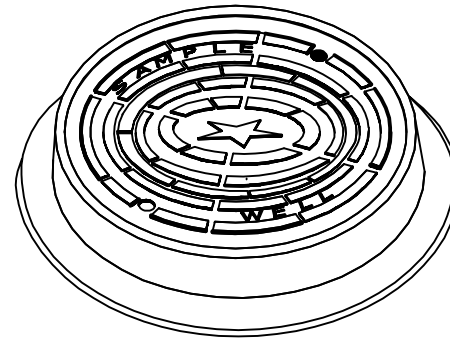


FRONT VIEW
N.T.S.

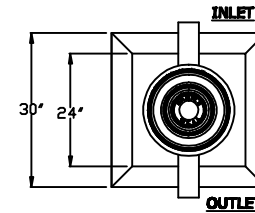
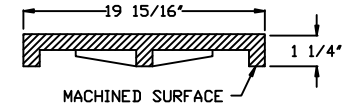
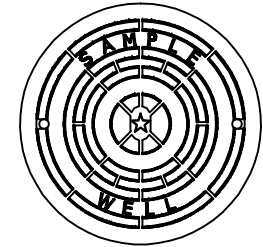


SIDE VIEW
N.T.S.

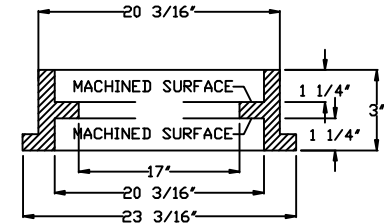
SAMPLE WELL BASIN
N.T.S.



SAMPLE WELL COVER INPAVED AREAS
N.T.S.



PLAN VIEW
N.T.S.



PRETREATMENT REQUIREMENTS

GREASE INTERCEPTORS OR OTHER PRETREATMENT DEVICES WILL BE REQUIRED FOR THE FOLLOWING FACILITIES:

- METAL FINISHING AND FABRICATION FACILITIES
- TRUCK WASHING FACILITIES, INCLUDING EXTERIOR WASHING
- COMMERCIAL CAR WASHES
- RESTAURANTS
- LABORATORIES
- BAKERIES AND COMMISSARIES
- MEDICAL FACILITIES
- COMMERCIAL LAUNDRIES
- OR, ANY FACILITY THAT WILL HAVE FLOOR DRAINS

THE FOLLOWING STANDARDS WILL APPLY TO FACILITIES INDICATED ABOVE:

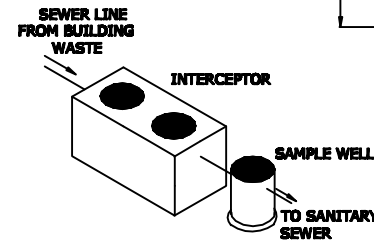
A MINIMUM 15" SAMPLE WELL, WILL BE STANDARD FOR INDUSTRIAL FACILITIES HAVING A SERVICE LINE 6" IN DIAMETER OR LESS, HOWEVER, ANY SERVICE LINE THAT IS 6" IN DIAMETER OR MORE AND IS 6' (FT.) IN DEPTH WILL BE REQUIRED TO HAVE A 24" SAMPLE WELL.

THE SAMPLE WELL MUST BE INSTALLED BETWEEN THE PRETREATMENT FACILITY (GREASE TRAP) AND SEWER LINE TO CITY.

SPECIFICATIONS FOR THE 15" AND 24" SAMPLE WELLS ARE ATTACHED FOR YOUR REFERENCE. A BOLTED STEEL COVER SHOULD BE INCLUDED TO THE SPECIFICATION AS AN OPTION WHEN AN ODOR PROBLEM IS LIKELY TO OCCUR.

SPECIFICATIONS

1. CONCRETE: CLASS 1 CONCRETE OF DESIGN STRENGTH OF 4500 PSI AT 28 DAYS. UNIT IS OF MONOLITHIC CONSTRUCTION AT FLOOR AND FIRST STAGE OF WALL WITH SECTIONAL RISER TO REQUIRED DEPTH.
2. C.I. CASTINGS: CAST IRON FRAMES AND GRATES ARE MANUFACTURED OF GREY CAST IRON CONFORMING TO ASTM A48-78 CLASS 3D, HEAVY-DUTY AASHTO H-20



**SAMPLE WELL
DETAIL, COVER & NOTES
DETAIL SHEET**

N.T.S.

NOTES:

1. SAMPLING WELL MUST BE INSTALLED UNDER A SEPARATE PLUMBING PERMIT.
2. USE 15" T&G R.C.P. FOR INSTALLATION FOR INSTALLATION 5'-0" DEEP AND LESS.
3. USE 24" T&G R.C.P. FOR INSTALLATION GREATER THAN 6'-0" DEEP.
(STD RING AND M.H. COVER REQUIRED)
4. SAMPLING WELL MUST BE SET IN A CIRCULAR OR SQUARE CONCRETE PAD
(1'-0" GREATER THAN OUTSIDE DIAMETER OF PIPE)
5. INSIDE INSTALLATION NOT PERMITTED WHERE OUTSIDE INSTALLATION IS POSSIBLE.
6. INSTALLATION INSIDE BUILDING MUST BE POURED IN PLACE (15"MIN).
NO CONCRETE PIPE IS PERMITTED.
(AIR-TIGHT COVER REQUIRED)
7. LAWN INSTALLATION MUST BE 4" ABOVE FINISHED GRADE.
8. DRIVE AND SIDEWALK INSTALLATION MUST BE BROUGHT TO FINISHED GRADE.
9. TO BE INSTALLED ON PRIVATE PROPERTY IN AN ACCESSIBLE LOCATION TO CITY PERSONNEL.